

**NOTICE OF INTENT TO APPLY FOR GRANT FUNDS  
JASPER COUNTY, TEXAS**

Jasper County is submitting the following application to the Texas General Land Office for funding under the Hurricane Harvey CDBG-MIT Competition.

**SCOPE OF WORK**

The proposed project includes road and drainage improvements along the Hwy 96 corridor from the City of Jasper to the Buna area:

- Stormwater detention basin along Sandy Creek tributary upstream from City of Jasper
- Stormwater detention basin along Davis Creek tributary upstream from City of Kirbyville
- Culvert replacement - CR 434 at Everett Creek
- Culvert replacement – CR 339 at Horn Branch
- Bridge replacement – CR 317 at Davis Creek
- Drainage relief structure - CR 317 at Davis Creek
- Road elevation & bridge replacement - CR 569 at Slaydon’s
- Culvert system replacement – CR 599
- Road elevation and hardening, and drainage system – CR 601
- Drainage improvements and roadway elevation – CR 603
- Drainage improvements and roadway elevation – CR 604
- Drainage improvements and roadway elevation – CR 607
- Drainage improvements and roadway elevation – CR 608
- Drainage improvements and roadway elevation – CR 610
- Culvert system replacement – CR 645
- Headwall construction – CR 725
- Drainage improvements – CR 740 at Goode Branch

**BUDGET**

Construction	\$ 11,315,395.00
Acquisition	\$ 920,000.00
Engineering	\$ 1,835,309.25
Administration	\$ 885,000.00
<b>TOTAL PROJECT COST</b>	<b>\$ 14,955,704.25</b>

**FUNDING SOURCES**

Harvey CDBG-MIT Funds	\$ 14,807,627.97
Local funds 1% match	\$ 148,076.28

**MAPS**

See attached project maps.

**BENEFICIARIES**

The project impact area benefits the City of Jasper, the City of Kirbyville and the Buna area.

Total population	12,755
Low to Moderate Income persons (LMI)	7,415
Low to Moderate Income %	58.13%

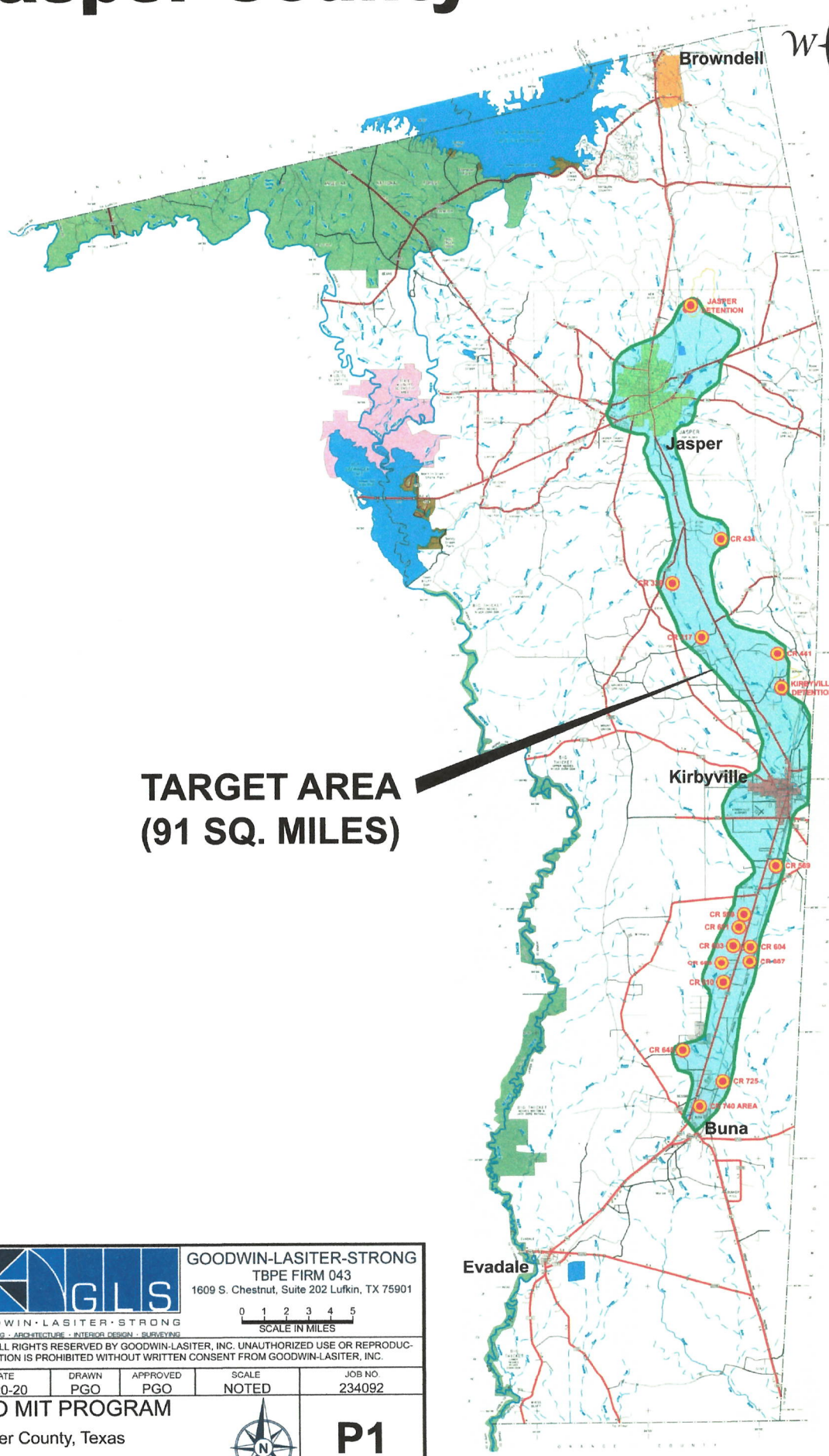
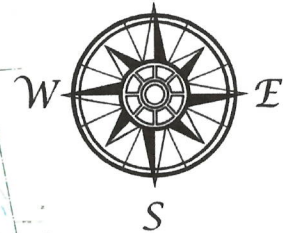
**PUBLIC COMMENTS**

The County will receive public comments related to this application through October 20, 2020. The application information is available for review by contacting the Jasper County Judge's office. Comments in writing can be delivered to Jasper County Courthouse, Office of the County Judge, located at 121 N. Austin Street, Room 106 in Jasper, Texas. For further information or to provide verbal comments, please contact County Judge Mark Allen at 409-384-2612.



Para obtener una copia en español, comuníquese con County Judge Mark Allen al 409-384-2612.

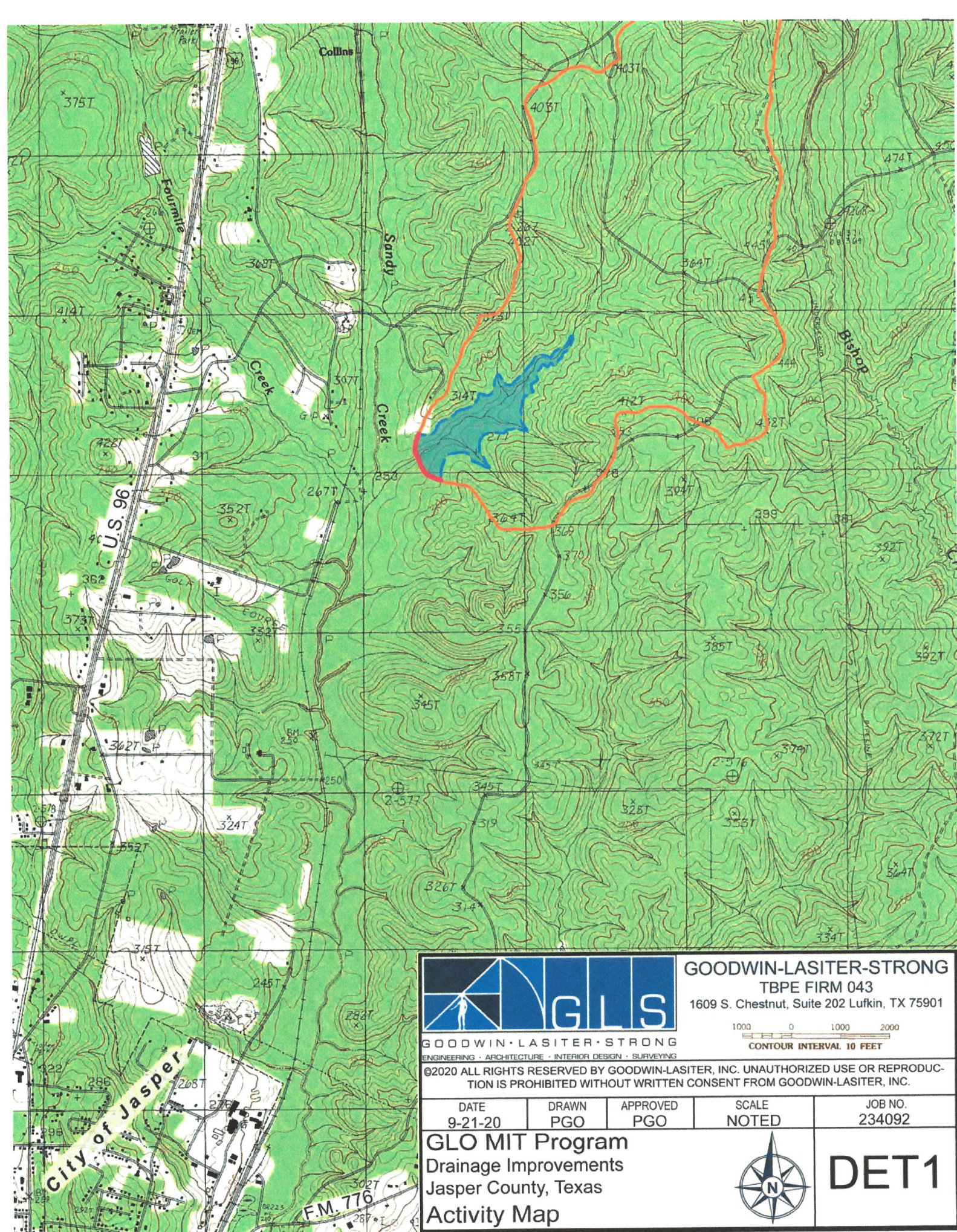
# Jasper County

North



**TARGET AREA  
(91 SQ. MILES)**

		<b>GOODWIN-LASITER-STRONG</b> TBPE FIRM 043 1609 S. Chestnut, Suite 202 Lufkin, TX 75901	
GOODWIN-LASITER-STRONG ENGINEERING - ARCHITECTURE - INTERIOR DESIGN - SURVEYING		0 1 2 3 4 5 SCALE IN MILES	
©2020 ALL RIGHTS RESERVED BY GOODWIN-LASITER, INC. UNAUTHORIZED USE OR REPRODUCTION IS PROHIBITED WITHOUT WRITTEN CONSENT FROM GOODWIN-LASITER, INC.			
DATE	DRAWN	APPROVED	JOB NO.
8-20-20	PGO	PGO	234092
<b>GLO MIT PROGRAM</b> Jasper County, Texas			 <b>P1</b>
<b>PLANNING MAP</b>			



**GOODWIN-LASITER-STRONG**  
 TBPE FIRM 043  
 1609 S. Chestnut, Suite 202 Lufkin, TX 75901



GOODWIN · LASITER · STRONG  
 ENGINEERING · ARCHITECTURE · INTERIOR DESIGN · SURVEYING

©2020 ALL RIGHTS RESERVED BY GOODWIN-LASITER, INC. UNAUTHORIZED USE OR REPRODUCTION IS PROHIBITED WITHOUT WRITTEN CONSENT FROM GOODWIN-LASITER, INC.

DATE 9-21-20	DRAWN PGO	APPROVED PGO	SCALE NOTED	JOB NO. 234092
-----------------	--------------	-----------------	----------------	-------------------

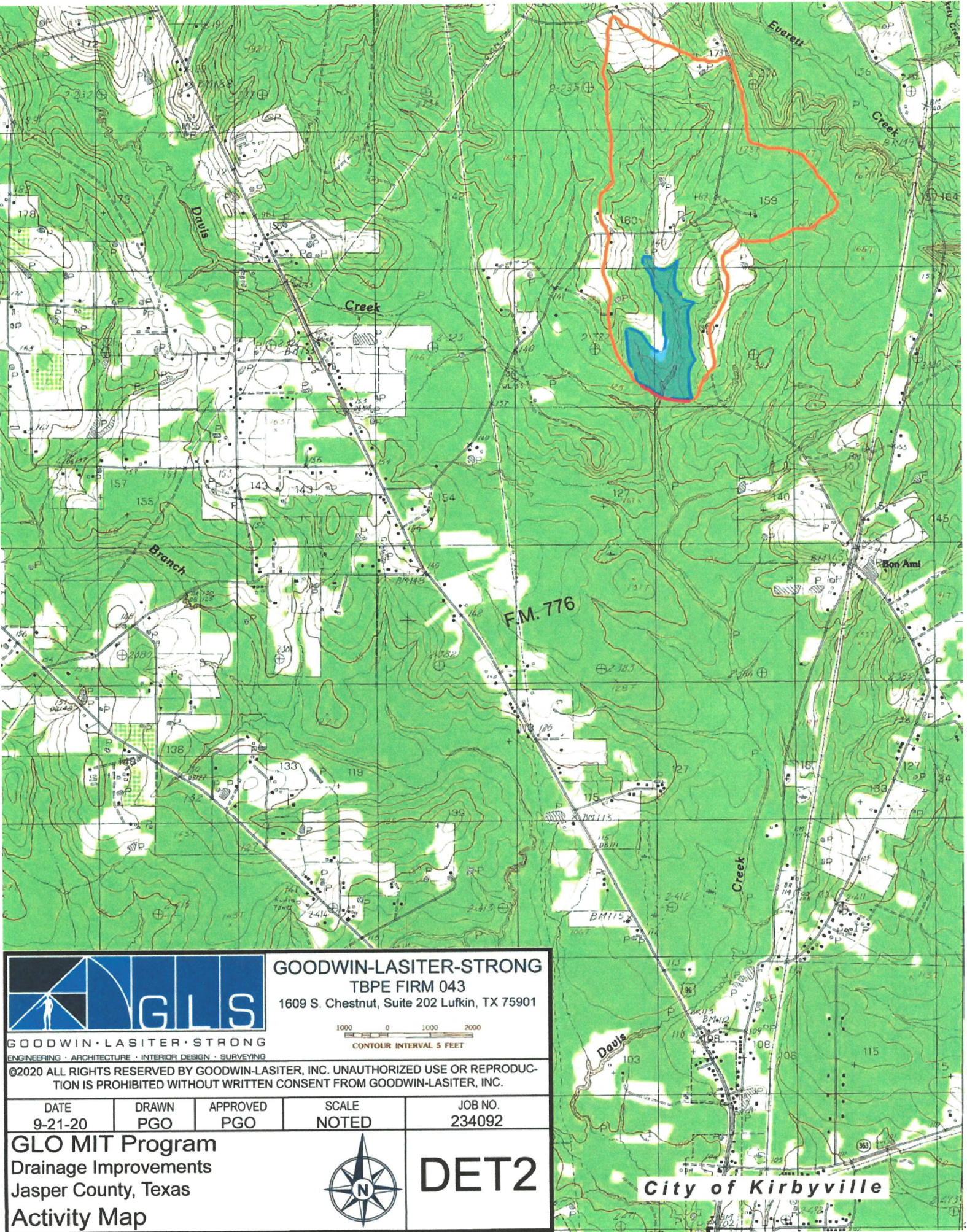
**GLO MIT Program**  
 Drainage Improvements  
 Jasper County, Texas  
 Activity Map



**DET1**

City of Jasper

F.M. 776



**GOODWIN-LASITER-STRONG**  
 TBPE FIRM 043  
 1609 S. Chestnut, Suite 202 Lufkin, TX 75901

ENGINEERING · ARCHITECTURE · INTERIOR DESIGN · SURVEYING

©2020 ALL RIGHTS RESERVED BY GOODWIN-LASITER, INC. UNAUTHORIZED USE OR REPRODUCTION IS PROHIBITED WITHOUT WRITTEN CONSENT FROM GOODWIN-LASITER, INC.



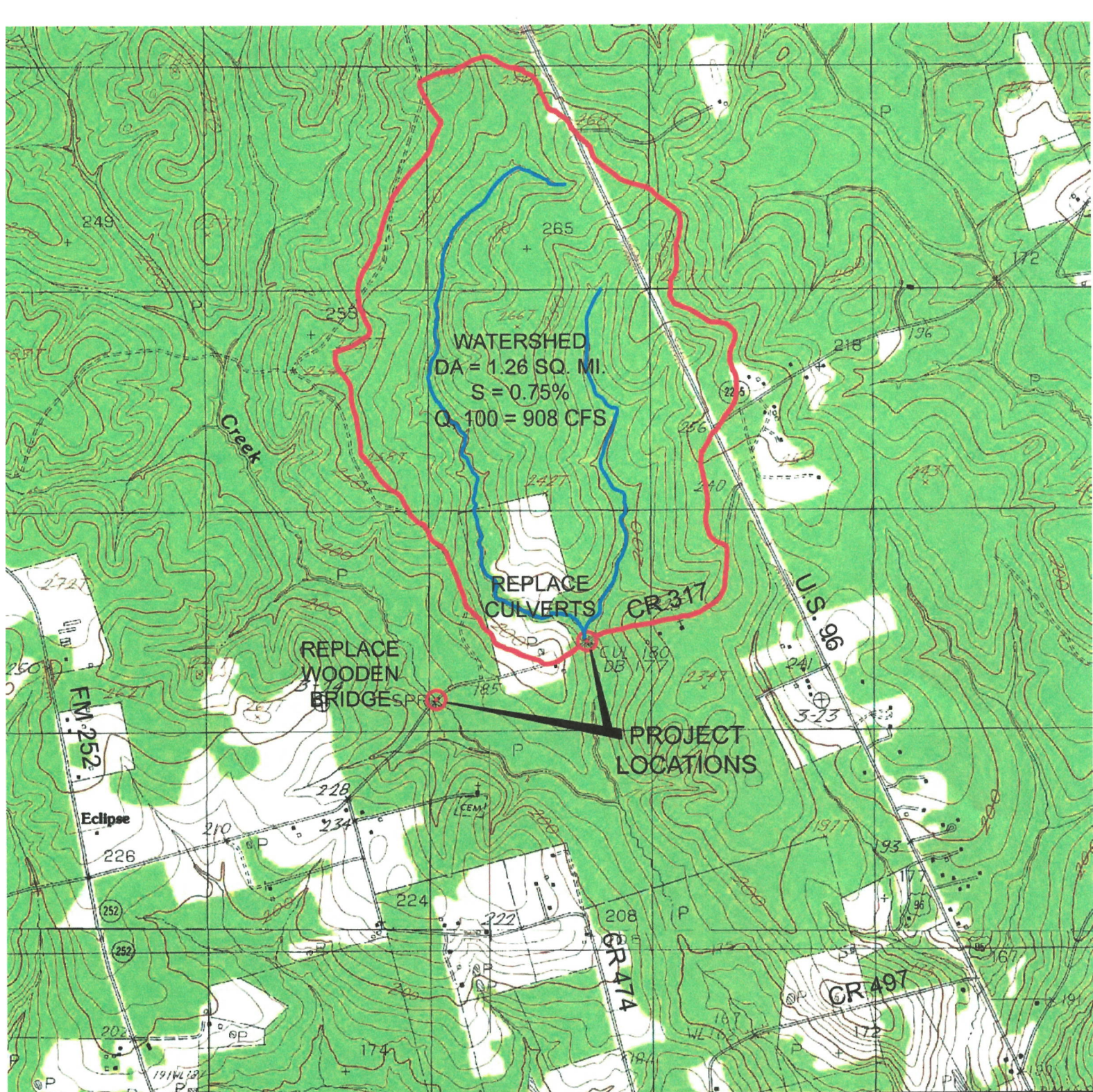
DATE 9-21-20	DRAWN PGO	APPROVED PGO	SCALE NOTED	JOB NO. 234092
-----------------	--------------	-----------------	----------------	-------------------

**GLO MIT Program**  
 Drainage Improvements  
 Jasper County, Texas  
 Activity Map



**DET2**

**City of Kirbyville**



**WATERSHED**  
 DA = 1.26 SQ. MI.  
 S = 0.75%  
 Q<sub>100</sub> = 908 CFS

**REPLACE CULVERTS CR 317**  
**REPLACE WOODEN BRIDGES**  
**PROJECT LOCATIONS**



**GOODWIN-LASITER-STRONG**  
 TBPE FIRM 043  
 1609 S. Chestnut, Suite 202 Lufkin, TX 75901  
 1000 0 1000 2000  
**CONTOUR INTERVAL 5 FEET**

GOODWIN · LASITER · STRONG  
 ENGINEERING · ARCHITECTURE · INTERIOR DESIGN · SURVEYING

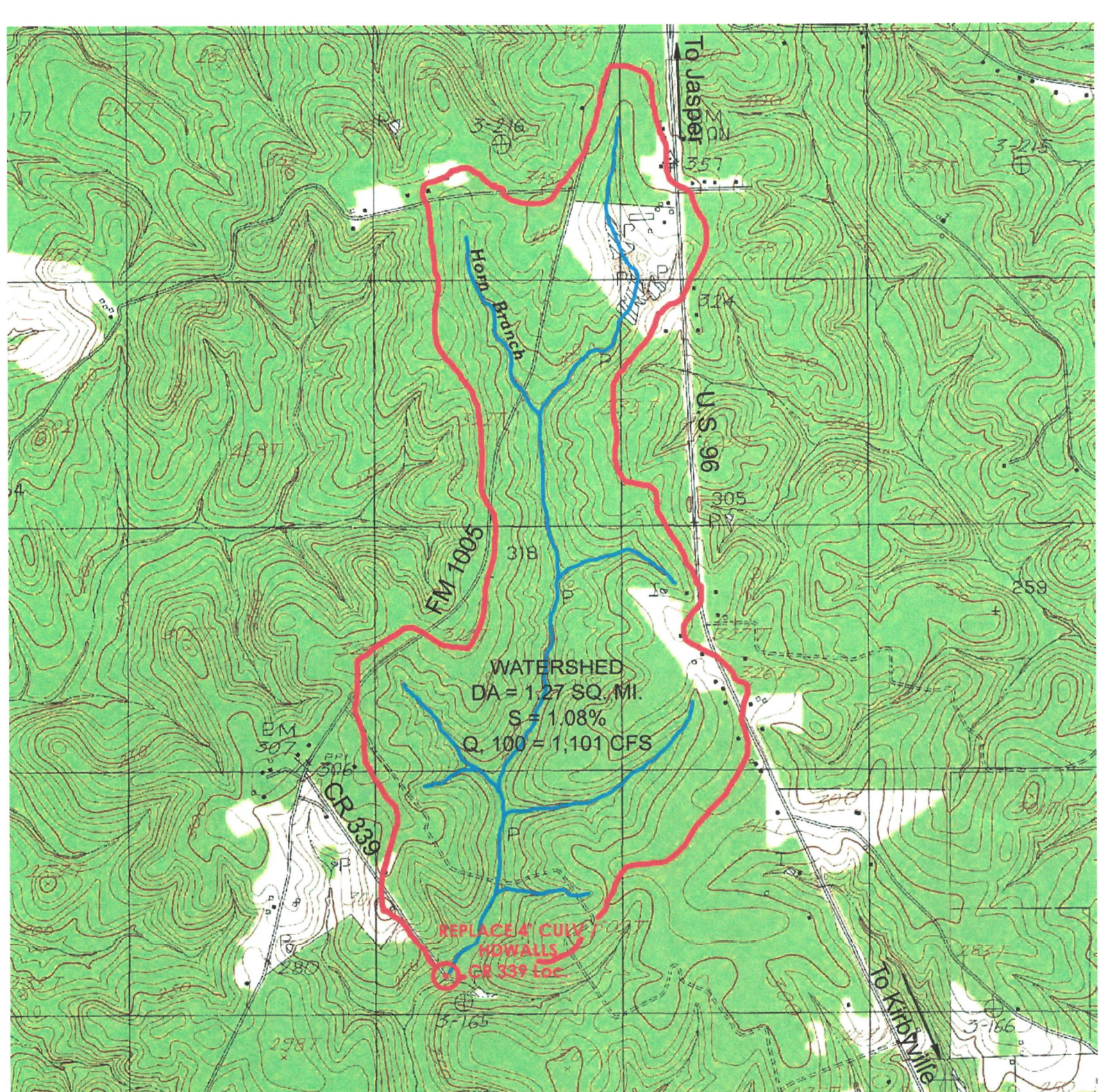
©2020 ALL RIGHTS RESERVED BY GOODWIN-LASITER, INC. UNAUTHORIZED USE OR REPRODUCTION IS PROHIBITED WITHOUT WRITTEN CONSENT FROM GOODWIN-LASITER, INC.

DATE 9-21-20	DRAWN PGO	APPROVED PGO	SCALE NOTED	JOB NO. 234092
-----------------	--------------	-----------------	----------------	-------------------

**GLO MIT Program**  
 Drainage Improvements  
 Jasper County, Texas  
 Activity Map



**CR 317**



WATERSHED  
 DA = 1.27 SQ. MI.  
 S = 1.08%  
 Q<sub>100</sub> = 1,101 CFS

REPLACE 4' CURB  
 HOWALLS  
 CR 339 LOC.



**GOODWIN-LASITER-STRONG**  
 TBPE FIRM 043  
 1609 S. Chestnut, Suite 202 Lufkin, TX 75901



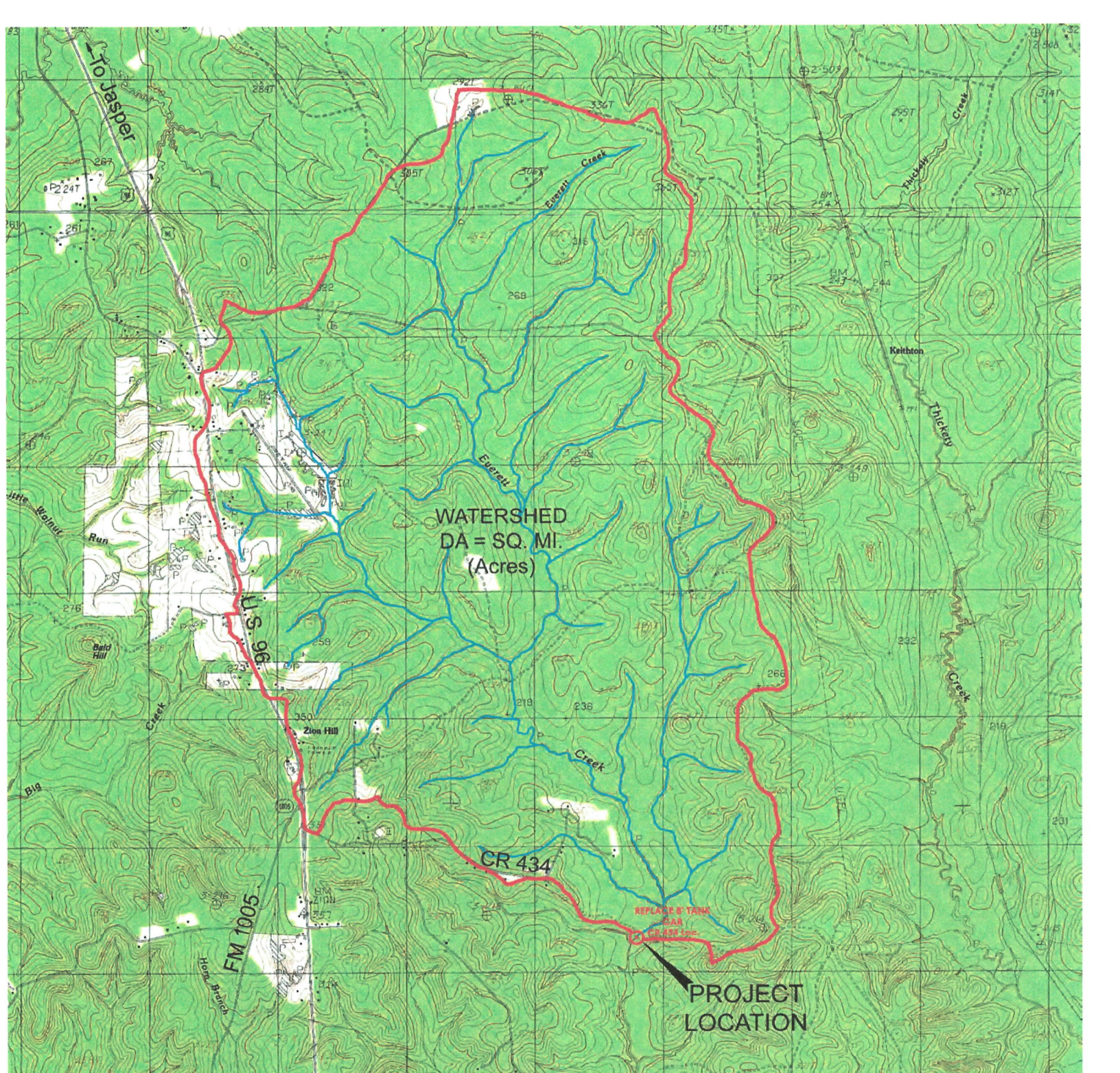
©2020 ALL RIGHTS RESERVED BY GOODWIN-LASITER, INC. UNAUTHORIZED USE OR REPRODUCTION IS PROHIBITED WITHOUT WRITTEN CONSENT FROM GOODWIN-LASITER, INC.

DATE 9-21-20	DRAWN PGO	APPROVED PGO	SCALE NOTED	JOB NO. 234092
-----------------	--------------	-----------------	----------------	-------------------

**GLO MIT Program**  
 Drainage Improvements  
 Jasper County, Texas  
 Activity Map



**CR 339**



WATERSHED  
DA = SQ. MI.  
(Acres)

PROJECT  
LOCATION



**GOODWIN-LASITER-STRONG**  
TBPE FIRM 043  
1609 S. Chestnut, Suite 202 Lufkin, TX 75901

GOODWIN · LASITER · STRONG  
ENGINEERING · ARCHITECTURE · INTERIOR DESIGN · SURVEYING



©2020 ALL RIGHTS RESERVED BY GOODWIN-LASITER, INC. UNAUTHORIZED USE OR REPRODUCTION IS PROHIBITED WITHOUT WRITTEN CONSENT FROM GOODWIN-LASITER, INC.

DATE 9-21-20	DRAWN PGO	APPROVED PGO	SCALE NOTED	JOB NO. 234092
-----------------	--------------	-----------------	----------------	-------------------

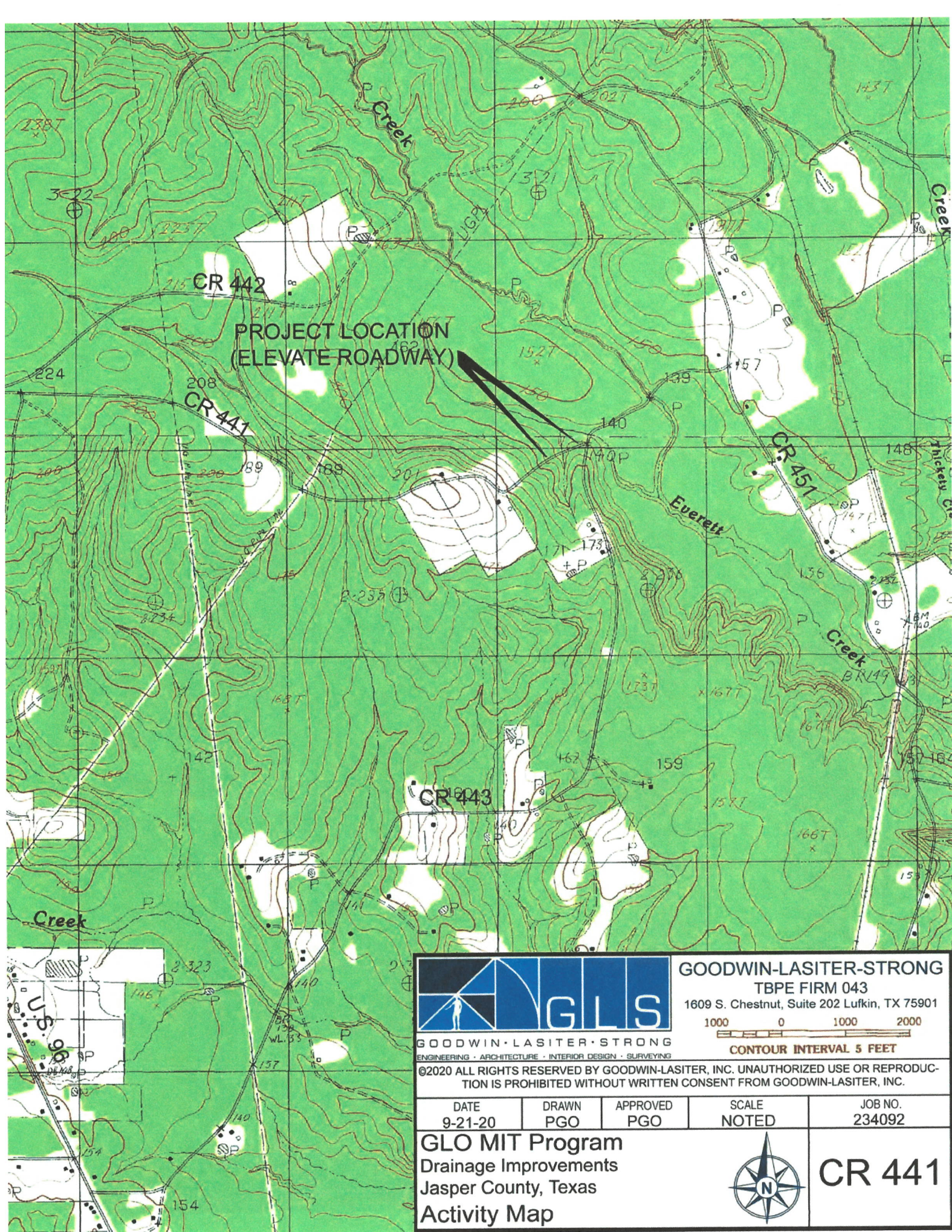
**GLO MIT Program**  
Drainage Improvements  
Jasper County, Texas  
Activity Map



**CR 434**

REPLACE CURVE TOWARDS CR 387 Loc.





**PROJECT LOCATION  
(ELEVATE ROADWAY)**



**GOODWIN · LASITER · STRONG**  
ENGINEERING · ARCHITECTURE · INTERIOR DESIGN · SURVEYING

**GOODWIN-LASITER-STRONG**  
TBPE FIRM 043  
1609 S. Chestnut, Suite 202 Lufkin, TX 75901



**CONTOUR INTERVAL 5 FEET**

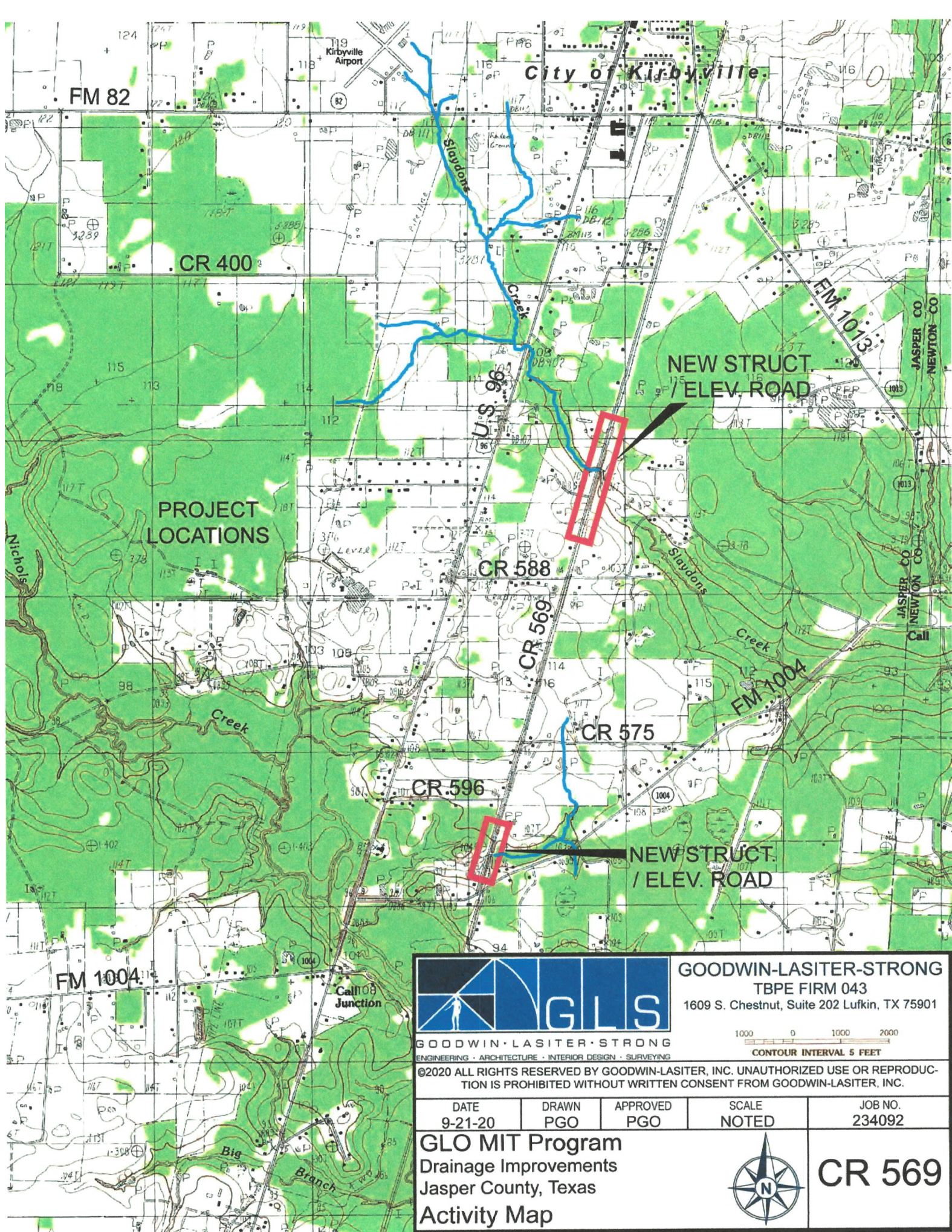
©2020 ALL RIGHTS RESERVED BY GOODWIN-LASITER, INC. UNAUTHORIZED USE OR REPRODUCTION IS PROHIBITED WITHOUT WRITTEN CONSENT FROM GOODWIN-LASITER, INC.

DATE 9-21-20	DRAWN PGO	APPROVED PGO	SCALE NOTED	JOB NO. 234092
-----------------	--------------	-----------------	----------------	-------------------

**GLO MIT Program**  
Drainage Improvements  
Jasper County, Texas  
Activity Map



**CR 441**



PROJECT LOCATIONS



**GOODWIN-LASITER-STRONG**  
 TBPE FIRM 043  
 1609 S. Chestnut, Suite 202 Lufkin, TX 75901

GOODWIN · LASITER · STRONG  
 ENGINEERING · ARCHITECTURE · INTERIOR DESIGN · SURVEYING



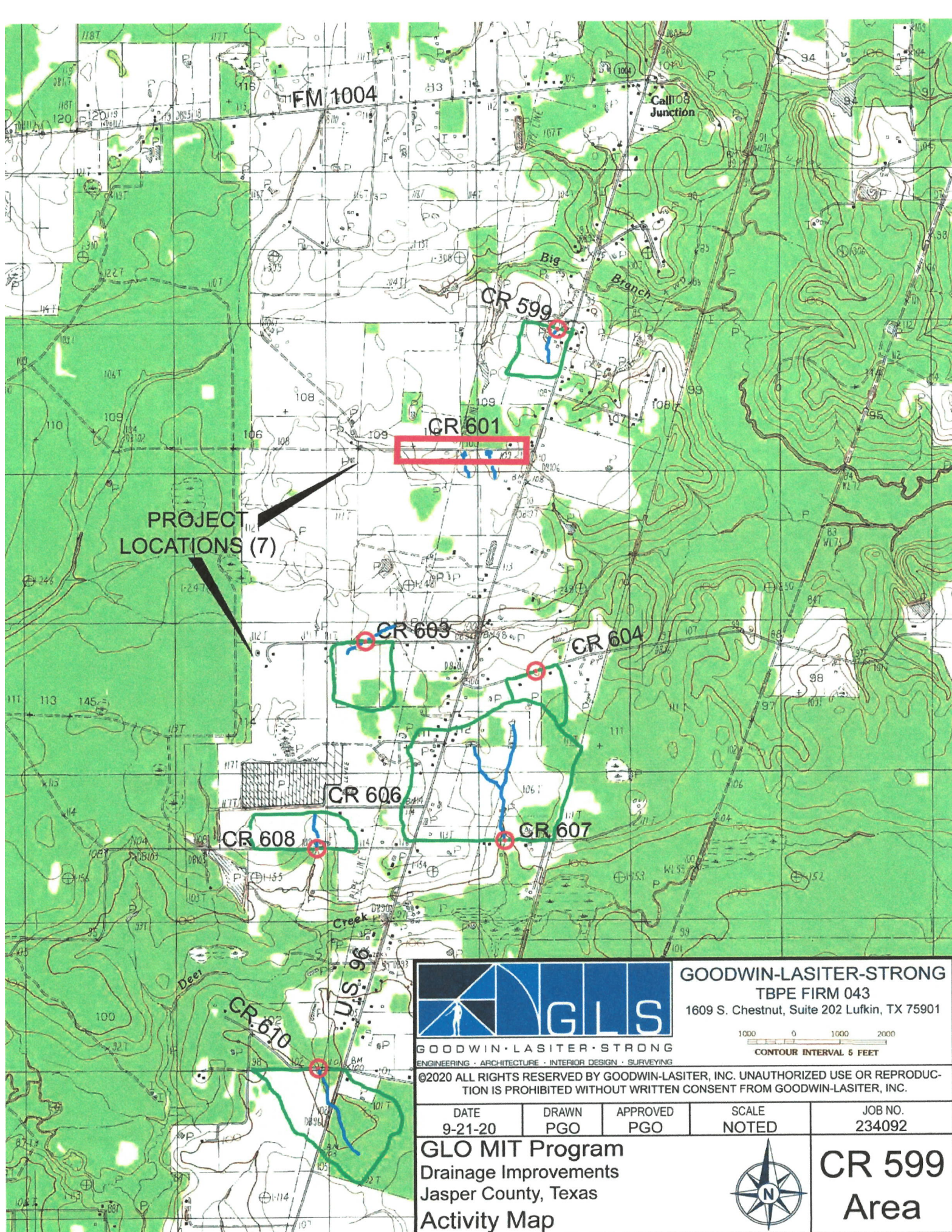
©2020 ALL RIGHTS RESERVED BY GOODWIN-LASITER, INC. UNAUTHORIZED USE OR REPRODUCTION IS PROHIBITED WITHOUT WRITTEN CONSENT FROM GOODWIN-LASITER, INC.

DATE 9-21-20	DRAWN PGO	APPROVED PGO	SCALE NOTED	JOB NO. 234092
-----------------	--------------	-----------------	----------------	-------------------

**GLO MIT Program**  
 Drainage Improvements  
 Jasper County, Texas  
 Activity Map



**CR 569**



**PROJECT LOCATIONS (7)**



**GOODWIN-LASITER-STRONG**  
 TBPE FIRM 043  
 1609 S. Chestnut, Suite 202 Lufkin, TX 75901

GOODWIN · LASITER · STRONG  
 ENGINEERING · ARCHITECTURE · INTERIOR DESIGN · SURVEYING



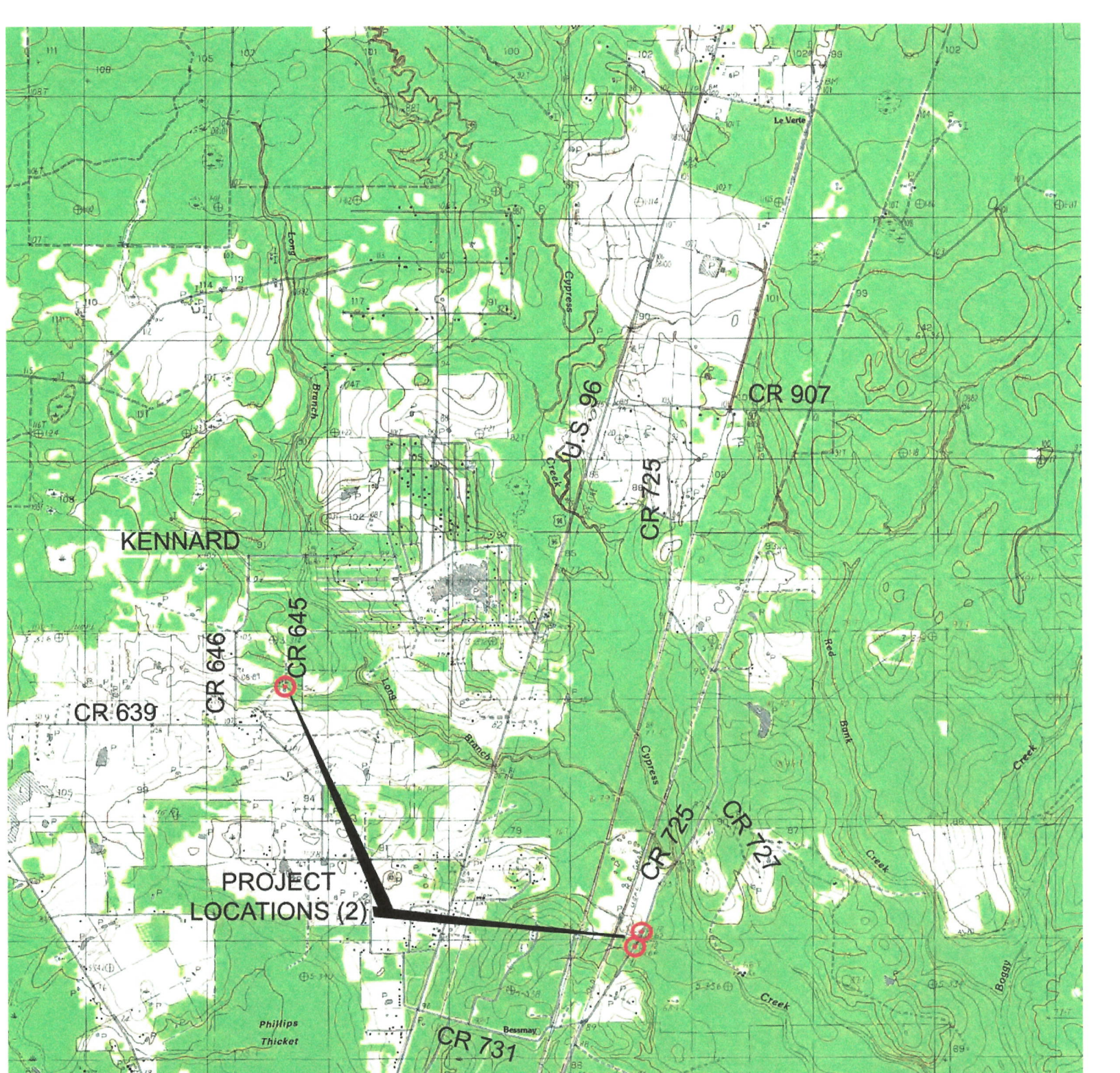
©2020 ALL RIGHTS RESERVED BY GOODWIN-LASITER, INC. UNAUTHORIZED USE OR REPRODUCTION IS PROHIBITED WITHOUT WRITTEN CONSENT FROM GOODWIN-LASITER, INC.

DATE 9-21-20	DRAWN PGO	APPROVED PGO	SCALE NOTED	JOB NO. 234092
-----------------	--------------	-----------------	----------------	-------------------

**GLO MIT Program**  
 Drainage Improvements  
 Jasper County, Texas  
 Activity Map



**CR 599**  
 Area



PROJECT  
LOCATIONS (2)



**GOODWIN-LASITER-STRONG**  
 TBPE FIRM 043  
 1609 S. Chestnut, Suite 202 Lufkin, TX 75901



GOODWIN · LASITER · STRONG  
 ENGINEERING · ARCHITECTURE · INTERIOR DESIGN · SURVEYING

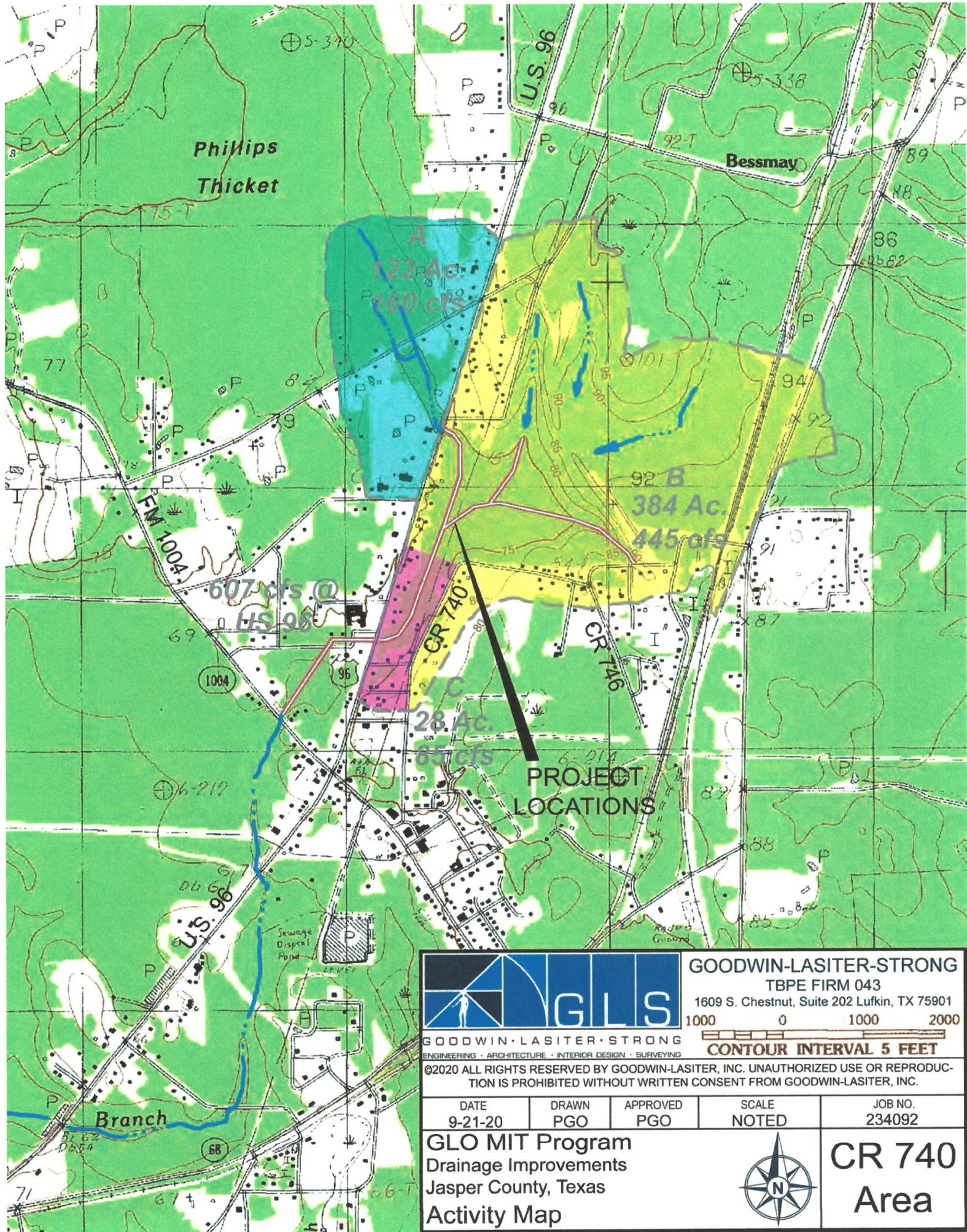
©2020 ALL RIGHTS RESERVED BY GOODWIN-LASITER, INC. UNAUTHORIZED USE OR REPRODUCTION IS PROHIBITED WITHOUT WRITTEN CONSENT FROM GOODWIN-LASITER, INC.

DATE 9-21-20	DRAWN PGO	APPROVED PGO	SCALE NOTED	JOB NO. 234092
-----------------	--------------	-----------------	----------------	-------------------

**GLO MIT Program**  
 Drainage Improvements  
 Jasper County, Texas  
 Activity Map



**CR 725**  
**Area**



**GOODWIN-LASITER-STRONG**  
 TBPE FIRM 043  
 1609 S. Chestnut, Suite 202 Lufkin, TX 75901

GOODWIN · LASITER · STRONG  
 ENGINEERING · ARCHITECTURE · INTERIOR DESIGN · SURVEYING

1000 0 1000 2000  
**CONTOUR INTERVAL 5 FEET**

©2020 ALL RIGHTS RESERVED BY GOODWIN-LASITER, INC. UNAUTHORIZED USE OR REPRODUCTION IS PROHIBITED WITHOUT WRITTEN CONSENT FROM GOODWIN-LASITER, INC.

DATE 9-21-20	DRAWN PGO	APPROVED PGO	SCALE NOTED	JOB NO. 234092
-----------------	--------------	-----------------	----------------	-------------------

**GLO MIT Program**  
 Drainage Improvements  
 Jasper County, Texas  
 Activity Map



**CR 740**  
**Area**